



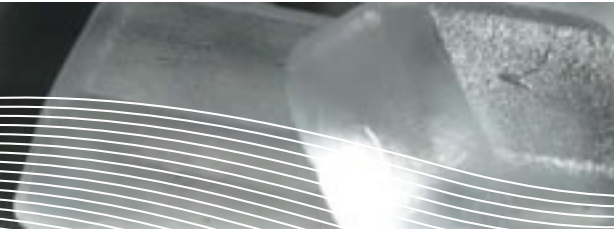
CHRIS BIRD-JONES

Ice-Tray - 24 hours

Cast lead crystal
25cm x 12cm x 4cm

This is the first in a series of cast pieces focusing on one essence of life – water. The ideas explored comment on the changing attitude to, and acknowledgement of the effects of environmental change, and how everyone in their daily lives can be individually responsible for their actions and therefore cumulatively have a global effect.

CHRIS BIRD-JONES



From 2000 to 2008, I was a senior lecturer in glass at the University of Wolverhampton. I am now the director of the Masters Programme in the Welsh School of Architectural Glass, at Swansea Metropolitan University. I also exhibit internationally and produce site specific Architectural Glass to commission.

Research active collaboration is an important aspect of my work. A current collaborative architectural project is 'Living Walls' with architect Phil Roberts, Honorary Fellow, Centre for Research into the Built Environment, University of Wales, Cardiff. It explores the combination of architectural glass with the use of photovoltaic inclusions for sustainable, self-illuminating structural and decorative walls.

For many years the basis of my practice has been founded on the quality of light within a space or object. Work is often concerned with harnessing the magic of the moment, 'a voyage of discovery', a quest to express those moments of 'intense consciousness', enjoying the surprising subtleties of glass, forms and surfaces, coupled with light. I like to work in series over varying periods of time, sometimes returning again and again to the fascination for a particular focus or enchantment. Within this there are two distinct aspects to my work, the controlled reduced refinement, losing everything that is superfluous to the essence, and the opposite, trust to process resulting in intrinsically more spontaneous pieces. The resulting work is always conceptually driven.

SELECTED BIOGRAPHY

EDUCATION

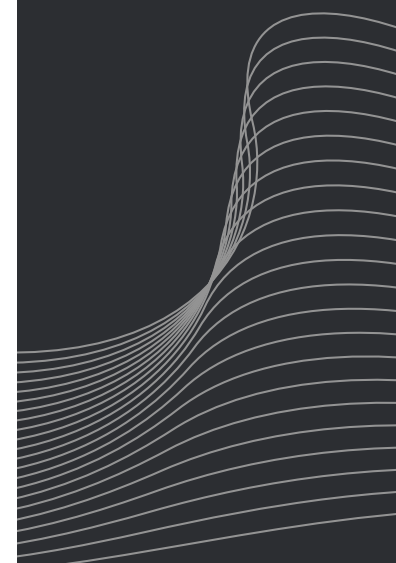
- 1987 MA Glass, Royal College of Art, London.
- 1977 HND Glass, Swansea College of Art.

WORK

- 2008 Director of the Masters Programme, Welsh School of Architectural Glass, Swansea Metropolitan University
- 2000 - 2008 Lecturer in Glass, University of Wolverhampton

AWARDS

- 2005 Creative Wales Award, Arts Council Wales.
- 2002 Wales Arts International Award to participate in Women's International Glass Network Exhibition / Conference, Australia.



CHRIS BIRD-JONES

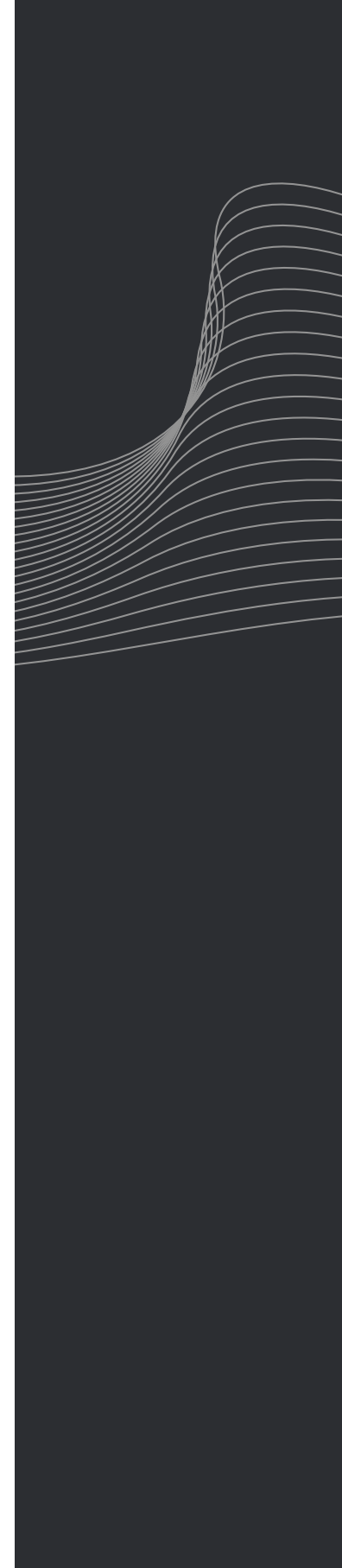
SELECTED BIOGRAPHY CONTINUED

EXHIBITIONS

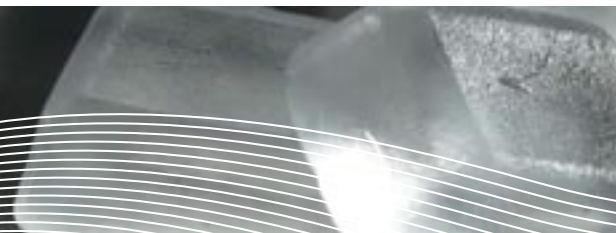
- 2008 Gathering Light, Metropolitan Cathedral, Liverpool, UK.
- 2007 Vasen 50 Künstler. Glasmuseum Frauenau, Germany.
- 2007 Glasmuseum Rheinbach; Glasmuseum Gernheim, Germany.
- 2006 Spirit Journeys. Glass Artists' Gallery, Sydney, Australia.

COMMISSIONS

- 2008 Tree of Knowledge, Entrance Glazing, Ysgol Dinas Bran Llangollen.
- 2007 Ysbyty Altwen, Dining Room Screen, Tremadoc.
- 2007 Caitlin and Aidan Memorial Window, Ysgol Faenol, Bodlwyddan.



CHRIS BIRD-JONES



从2000年至2008年,我在Wolverhampton大学担任玻璃专业的高级讲师。目前就职于Swansea Metropolitan大学的Welsh建筑玻璃学院,担任研究生项目主任。另外,我还举办国际性的展览,以及受委托制作特定地址的建筑玻璃。

研究性合作活动是我工作的一个重要方面。目前的一个合作性建筑项目,就是和威尔士大学建设环境研究中心的名誉合作伙伴Phil Rovers合作的“活着的墙”。作品意在探索建筑玻璃与光电太阳能使用的结合,以制造出可持久的,自主照明的,具有结构性和装饰性的墙。

这么多年来,我实践的基础建立在一个空间内或物体内光线特制的特点上。作品往往关注控制及利用一个瞬间的魔力,一个“探

索旅程”,探求表达那些时刻的“强烈的意识”;享受玻璃,造型及表面与光线接触后那些令人惊讶的细腻特制。我喜欢在不同的时间段工作,有时候会为一个特殊的关注或亮点着迷而不断的折回头去。这其中,我的创作有两个完全迥异的特质:一方面,精简提炼,摒弃一切对本质而言多余的成分;另一方面,恰恰相反,对过程的信任带来更多本质上自发随意的作品,这样的创作结果往往趋向概念化。

参展作品

冰盘-24小时,

窑制铸造铅玻璃

25cm x 12cm x 4cm.